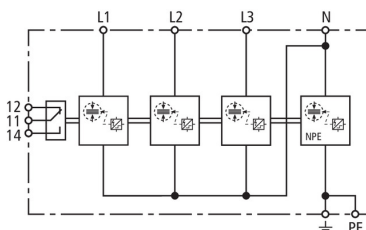


## DVA CSP 3P 100 S FM (900 367)

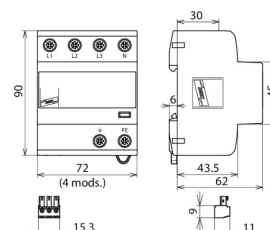
- Prewired combined lightning current and surge arrester, energy-coordinated with power supply systems for cell sites (DEHNvap CSP ... Cell Site Protection)
- Encapsulated spark gap technology with a width of only 1 module / pole allows compact and space-saving design for easy installation within the power supply cabinets



Figure without obligation



Basic circuit diagram DVA CSP 3P 100 S FM



Dimension drawing DVA CSP 3P 100 S FM

Combined lightning current and surge arrester for use in triphase TT and TN systems (3+1 configuration) for protecting 230 V power supply systems of cell sites

Type	DVA CSP 3P 100 S FM
Part No.	900 367
SPD according to EN 61643-11 / ... IEC 61643-11	type 1 + type 2 / class I + class II
Energy coordination with terminal equipment ( $\leq 10$ m)	type 1 + type 2 + type 3
Nominal voltage (a.c.) ( $U_n$ )	230 / 400 V (50 / 60 Hz)
Max. continuous operating voltage (a.c.) [L-N]/[N-PE] ( $U_c$ )	255 V (50 / 60 Hz)
Lightning impulse current (10/350 $\mu$ s) [L-N]/[N-PE] ( $I_{imp}$ )	25 / 100 kA
Specific energy [L-N]/[N-PE] (W/R)	156.25 kJ/ohms / 2.50 MJ/ohms
Nominal discharge current (8/20 $\mu$ s) ( $I_n$ )	25 / 100 kA
Voltage protection level [L-N]/[N-PE] ( $U_p$ )	$\leq 1.5$ kV / $\leq 1.5$ kV
Follow current extinguishing capability [L-N]/[N-PE] ( $I_n$ )	25 kA <sub>rms</sub> / 100 A <sub>rms</sub>
Follow current limitation/Selectivity	no tripping of a 32 A gG fuse up to 25 kA <sub>rms</sub> (prosp.)
Response time ( $t_A$ )	$\leq 100$ ns
Max. backup fuse (L) up to $I_K > 25$ kA <sub>rms</sub>	250 A gG
Temporary overvoltage (TOV) [L-N] ( $U_T$ ) – Characteristic	440 V / 120 min. – withstand
Temporary overvoltage (TOV) [N-PE] ( $U_T$ ) – Characteristic	1200 V / 200 ms – withstand
Additional abnormal voltage test: 485 V AC / 50 Hz for 24 h	withstand
Let-Through-Energy in combination with an MOV S20K275 ( $I_{imp} = 2.5 \dots 25$ kA)	$< 0.5$ J
Safe behavior at $U = 320$ V and $I_{SCCR} = 13.5$ kA in combination with a fuse 63 A gG	withstand
Operating temperature range [parallel]/[series] ( $T_U$ )	-40°C...+80°C
Operating state/fault indication	green / red
Number of ports	1
Cross-sectional area (L1, L2, L3, N, PE, $\ominus$ ) (min.)	1.5 mm <sup>2</sup> solid / flexible
Cross-sectional area (L1, L2, L3, N, PE, $\ominus$ ) (max.)	35 mm <sup>2</sup> stranded / 25 mm <sup>2</sup> flexible
For mounting on	35 mm DIN rails acc. to EN 60715
Enclosure material	thermoplastic, red, UL 94 V-0
Place of installation	indoor installation
Degree of protection	IP 20
Capacity	4 module(s), DIN 43880
Approvals	KEMA
Type of remote signalling contact	changeover contact
Switching capacity (a.c.)	250 V / 0.5 A
Switching capacity (d.c.)	250 V / 0.1 A; 125 V / 0.2 A; 75 V / 0.5 A
Cross-sectional area for remote signalling terminals	max. 1.5 mm <sup>2</sup> solid / flexible
Weight	469 g
Customs tariff number (Comb. Nomenclature EU)	85363090
GTIN	4013364322288
PU	1 pc(s)

We reserve the right to introduce changes in performance, configuration and technology, dimensions, weights and materials in the course of technical progress. The figures are shown without obligation.