

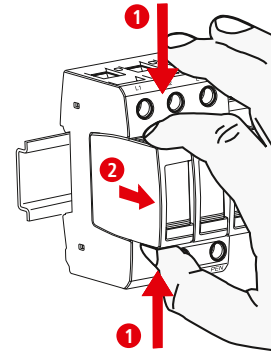
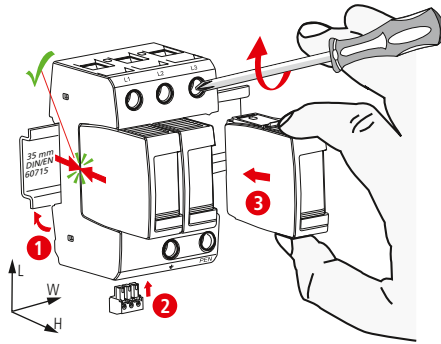
DEHNguard modular DG M WE 600 (FM)

- DE Einbauanleitung
- GB Installation instructions
- IT Istruzioni di montaggio
- FR Instructions de montage
- NL Montagehandleiding
- ES Instrucciones de montaje
- PT Instruções de montagem
- DK Monteringsvejledning
- SE Monteringsanvisning
- FI Asemusohje
- GR Οδηγίες συναρμολόγησης
- PL Instrukcja montażu
- CZ Montážní návod
- TR Kurulum Talimatları
- RU Инструкция по монтажу
- CN 安装说明
- HU Szerelési útmutató
- JP 設置説明書



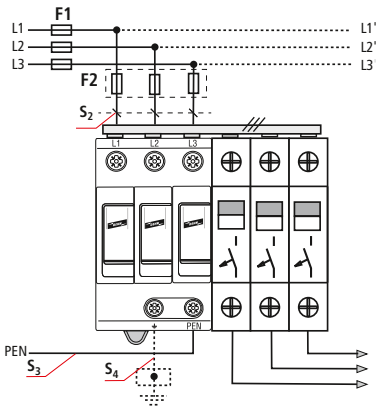
II IEC 61643-11...
2 EN 61643-11...

PZ 2 4 Nm



DG M WE 600 (FM)	
	DG MOD 750
U_N / Tol.: $\pm 10\%$	480 V
U_C	600 V
U_{mov}	750 V
f_N	50/60 Hz
max. I_{sc}	100 A gG
I_{scCR}	25 kA _{rms}
I_{max}	25 kA
θ°	-40°C ... +80°C
Φ	5% ... 95%
I_{PE}	< 0.1 mA
IP \uparrow)	20
L x W x H	90 mm x 54 mm x 73 mm

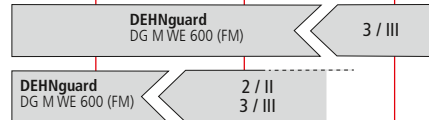
TNC



DEHNguard modular DG M WE 600 (FM),		DEHNguard modular DG M WE 600 (FM),				
F1 A gG	F2 A gG	F1 A gG	S ₂ / mm ²	S ₃ / mm ²	S ₄ / mm ²	F2 A gG
 $F1 \leq 100$ A gG $F2$	 $F2 \leq 100$ A gG	25	2.5	6	6	---
		35	4	6	6	---
 $F1 > 100$ A gG	 $F2 \leq 100$ A gG	40	4	6	6	---
		50	6	6	6	---
		63	10	10	10	---
		80	10	10	10	---
		100	16	16	16	---
> 100	16	16	16	100		

min. \square L, N, PEN, \perp	1.5 mm ²	
max. \square L, N, PEN, \perp	25 mm ²	35 mm ²
\square	16 mm ² Cu ≥ 15.5 mm	

LPZ 0_A LPZ 0_B LPZ 1 LPZ 2 LPZ 3



DEHNguard modular
DG M WE 600 FM

